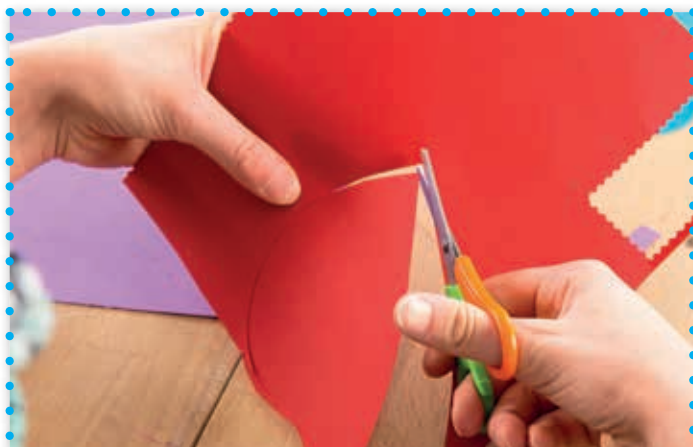


NAVODILA ZA IZDELAVO PTIČKE FRIDE



1

Po šabloni iz papirja izreži posamezne dele.



2

Izberi barvast papir, da bodo krila PTIČKE FRIDE nekaj posebnega.



3

Na ptičje telo nalepi nogo, krilo, oko in čopek.



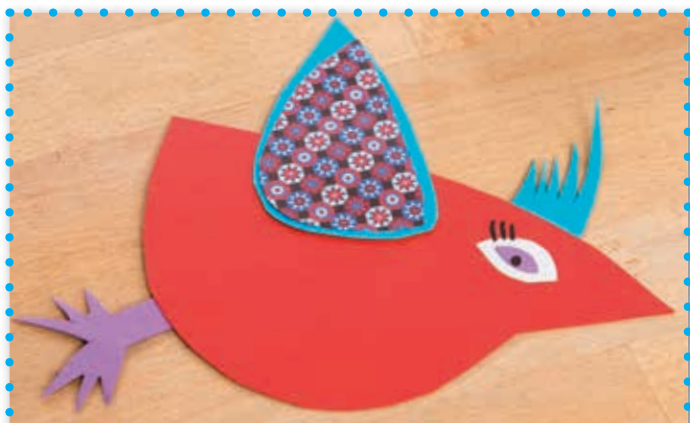
4

Manjšo perut nalepi na večjo.



5

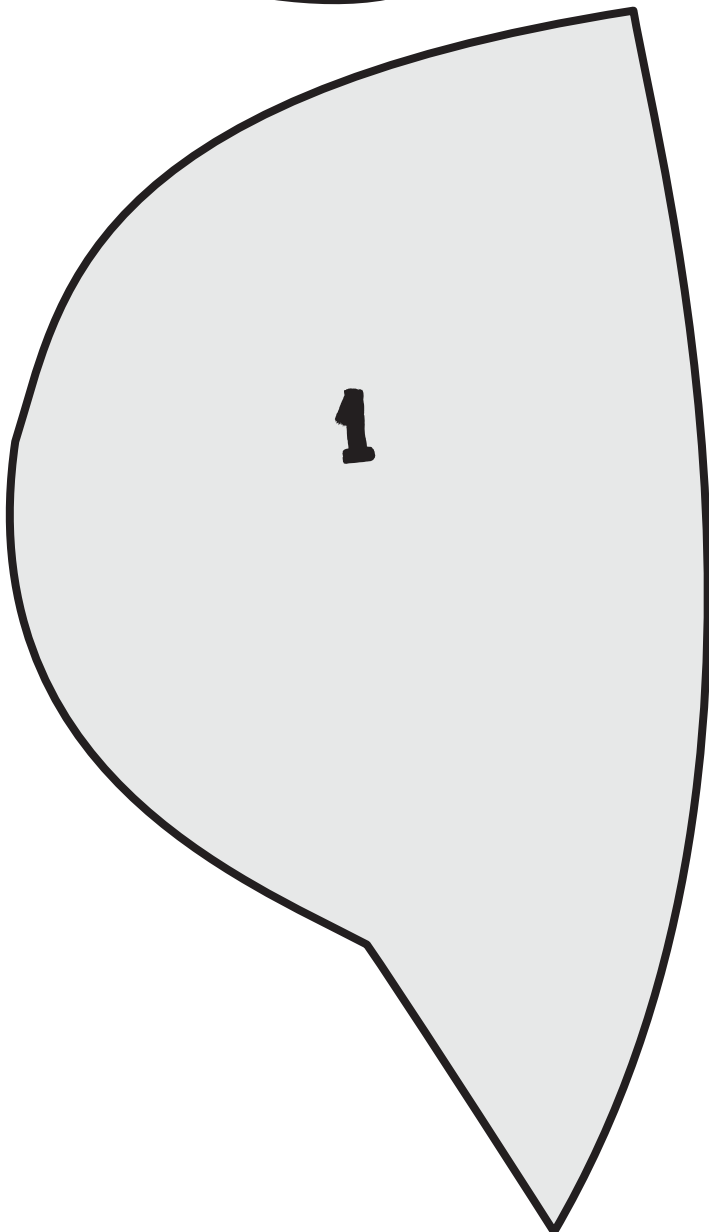
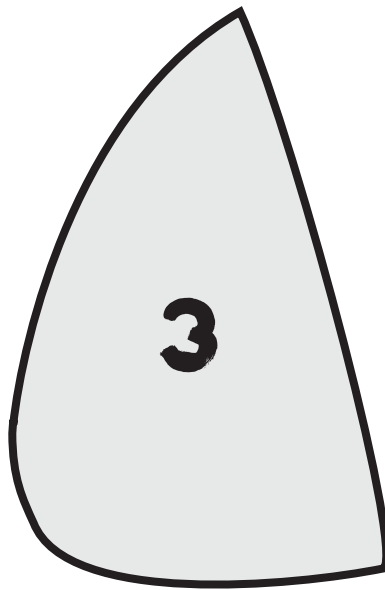
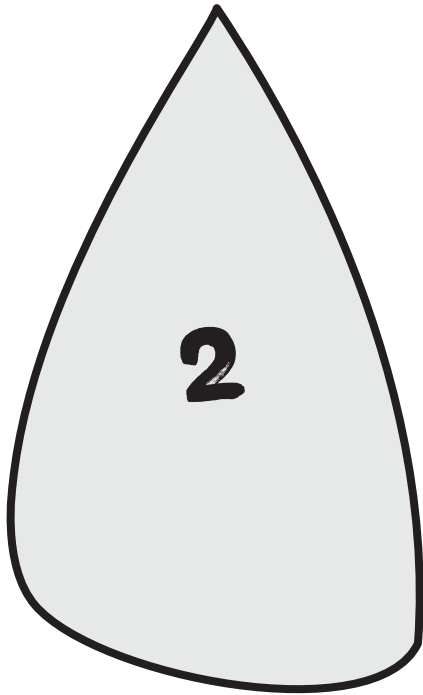
Na očesu nariši trepalnice.

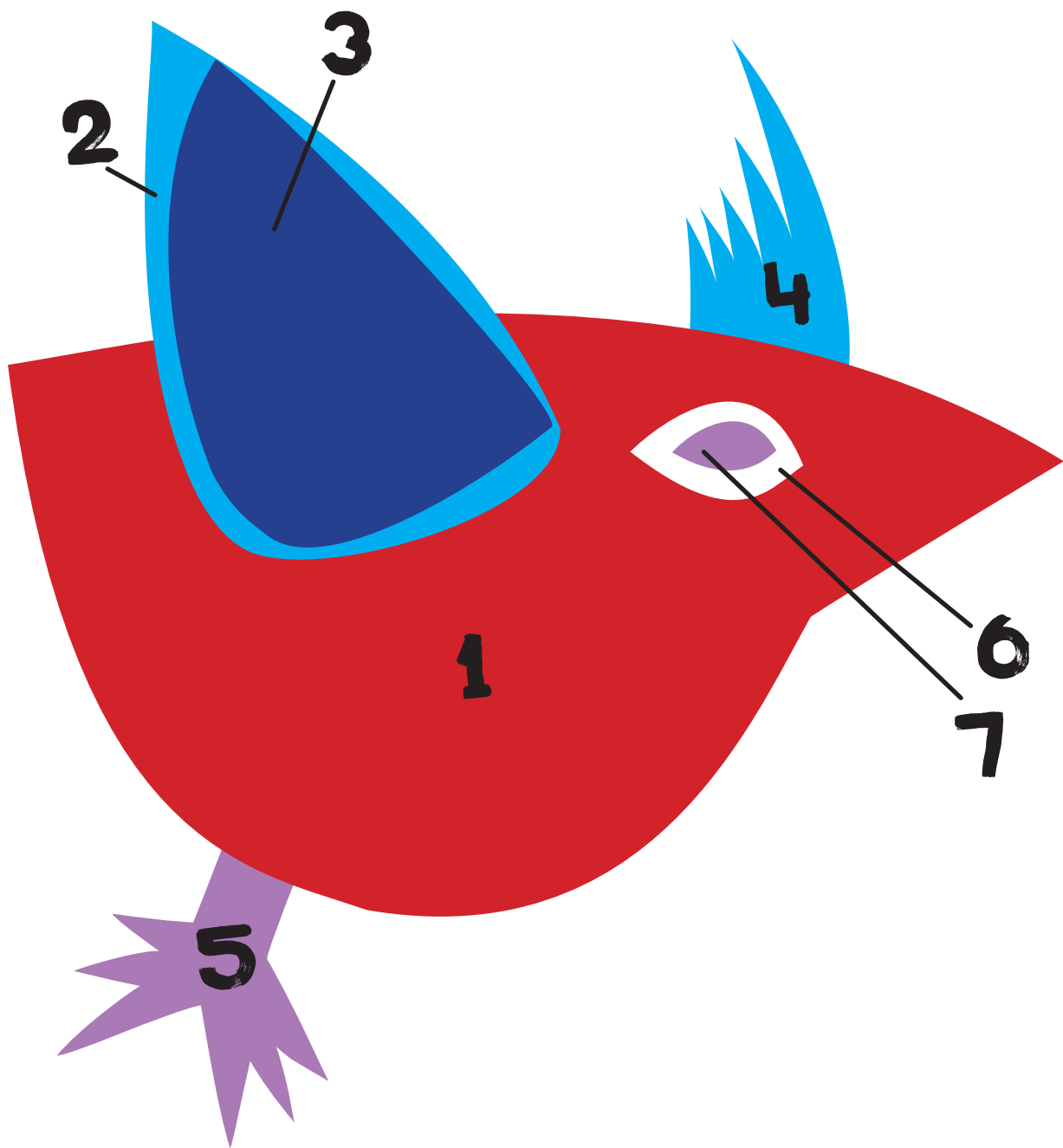


6

PTIČKA FRIDA je izdelana!

IZREŽI ŠABLONE IN ZAČNI USTVARJATI





2

3

4

1

6

7

5